



Mercedes-Benz

Accessories
Accessoires

Trailer hitch

Installation instructions

Dispositif d'attelage

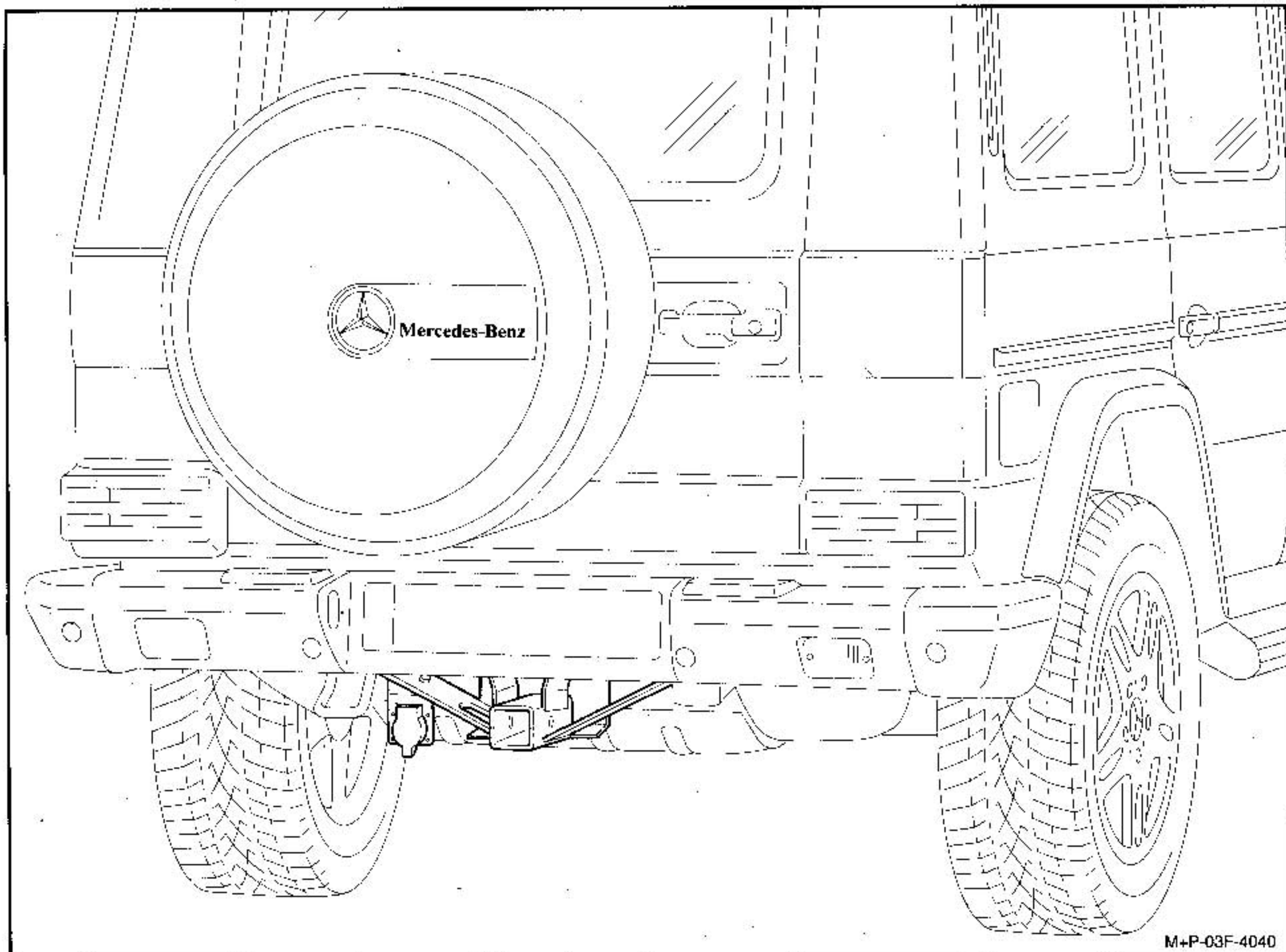
Instructions de montage



Important document for workshops



Document important pour les ateliers



M+P-03F-4040



Applicability

These installation instructions apply to the G-Class vehicle only. Use with other vehicles may result in damage to the vehicle or other accident. Additional literature indicated via WIS, is available at an authorized Mercedes-Benz Light Truck Dealer.

A Parts list for ordering

Trailer hitch B6 685 0036

Individual parts

- (1) Trailer hitch
- (2) M14 screws / 1.5 x 40-10.9 (4 pcs.)
- (3) M14 nuts, self-locking / 1.5 (4 pcs.)
- (4) Washers, 14 mm dia (4 pcs.)
- (5) M10 x 30-10.9 screws, micro-encapsulated (4 pcs.)
- (6) Washers, 10 mm dia (4 pcs.)
- (7) M6 x 20 screws (2 pcs.)
- (8) M6 nuts (2 pcs.)
- (9) Flat plug connectors, 6.3 (2 pcs.)
- (10) Insulated housings (2 pcs.)
- (11) Adhesive label
- (12) Connector plate
- (13) Cable set with diode board
- (14) Receptacle outlet, 7-pin USA
- (15) Flasher/brake module
- (16) Control unit (USGA II)
- (17) Short adapter, 7-to-4 pin
- (18) Sheet-metal screws 4.8 x 13 (4 pcs.)
- (19) M5 nuts (2 pcs.)
- (20) 5 mm washers (2 pcs.)
- (21) Retaining bracket
- (22) Cable straps, 140 x 3.6 (5 pcs.)
- (23) Cable strap 260 x 3.3
- (24) Cable straps with mounting foot (2 pcs.)

Please make sure that all parts are included in the kit and are used as called for in these instructions.

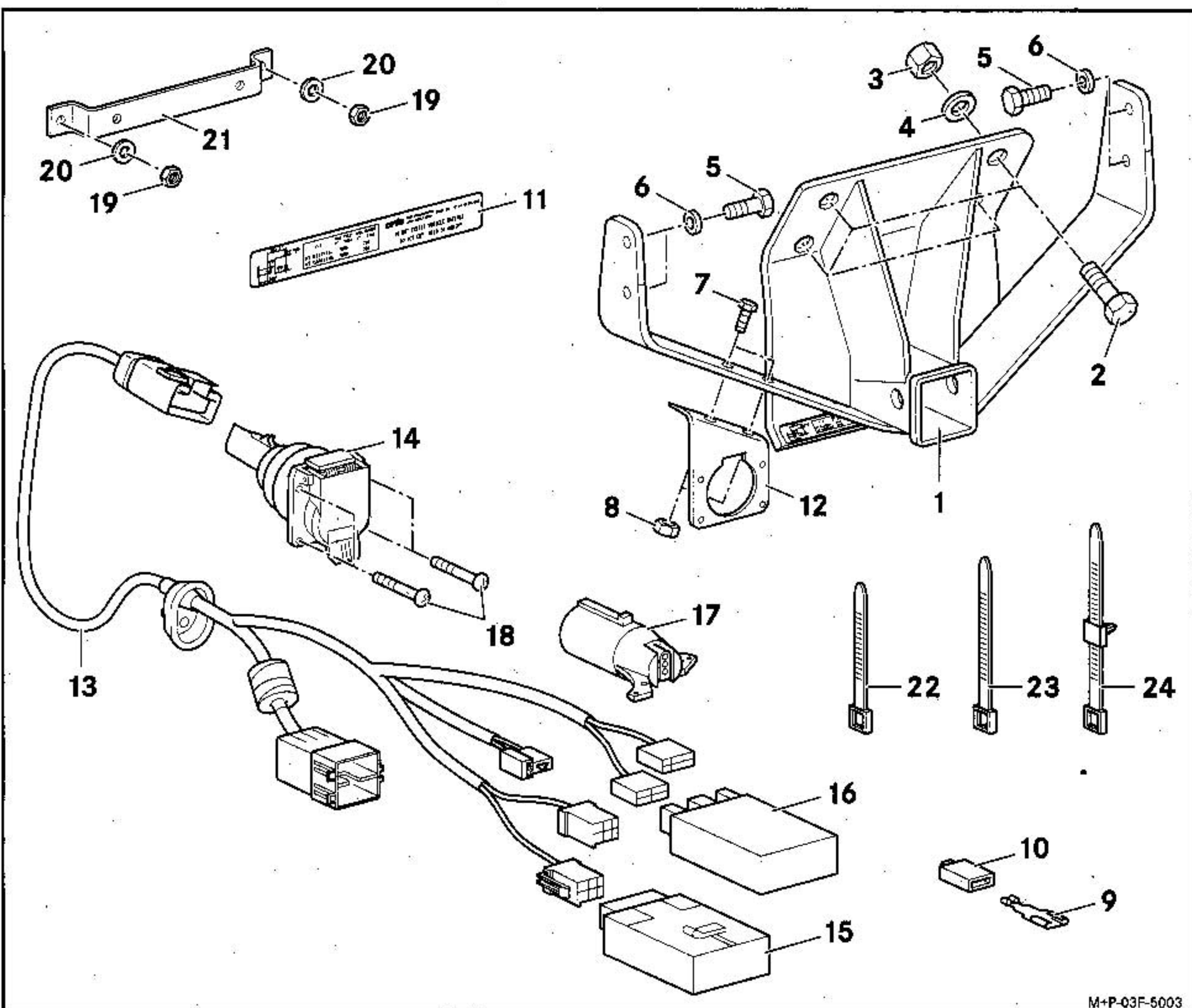
Technical data

Maximum Tongue Weight:	
Load-carrying trailer hitch:	700 lb (317.8 kg)
(amount of weight that can be safely laterally applied to the hitch).	
Load-distributing trailer hitch:	700 lb (317.8 kg)
Maximum Trailer Weight:	
Load-carrying trailer hitch:	7000 lb (3178.0 kg)
Load-distributing trailer hitch:	7000 lb (3178.0 kg)



Warning!

Exceeding maximum tongue and/or trailer weight can result in an accident.



B General information on installation

Note

The manufacturer reserves the right to change the technical details from those shown in the illustrations (pieces may vary from illustration) contained in these installation instructions.



Warning!

Installation of the trailer hitch should only be carried out by a qualified technician or qualified automotive facility, who or which has the necessary knowledge, tools and equipment for the installation work Mercedes-Benz recommends the work to be carried out by the Mercedes-Benz Light Truck Center.

Each individual workstep shown in the installation instructions, the general advice and safety advice must be accurately followed.

Failure to follow installation instructions and perform work pursuant to this manual may result in failure of the trailer hitch to operate properly, which could result in an accident and serious injuries.

Work Improperly carried out on electronic components and associated software could cause them to cease functioning. Because the vehicle's electronic components are interconnected, any modifications made may produce an undesired effect on other systems. Electronic malfunctions could seriously impair the operating safety of your vehicle.

See your authorized Mercedes-Benz Light Truck Center for repairs or modifications to electronic components.

Other improper work or modifications on the vehicle could also have a negative impact on the operating safety of the vehicle.

Some safety systems only function while the engine is running. You should therefore never turn off the engine while driving.

General Safety Information

Do not reuse screws and nuts.

The cable set must be installed so that it cannot be chafed or damaged in any way, chafed or damaged cables could cause a short and possibly a fire.

Trailer hitches, which have become damaged by accident, overloading or backing into something, must be replaced. Repairs such as bending, mechanical processing, welding and the like should not be performed as it may compromise the structural integrity of the trailer hitch.

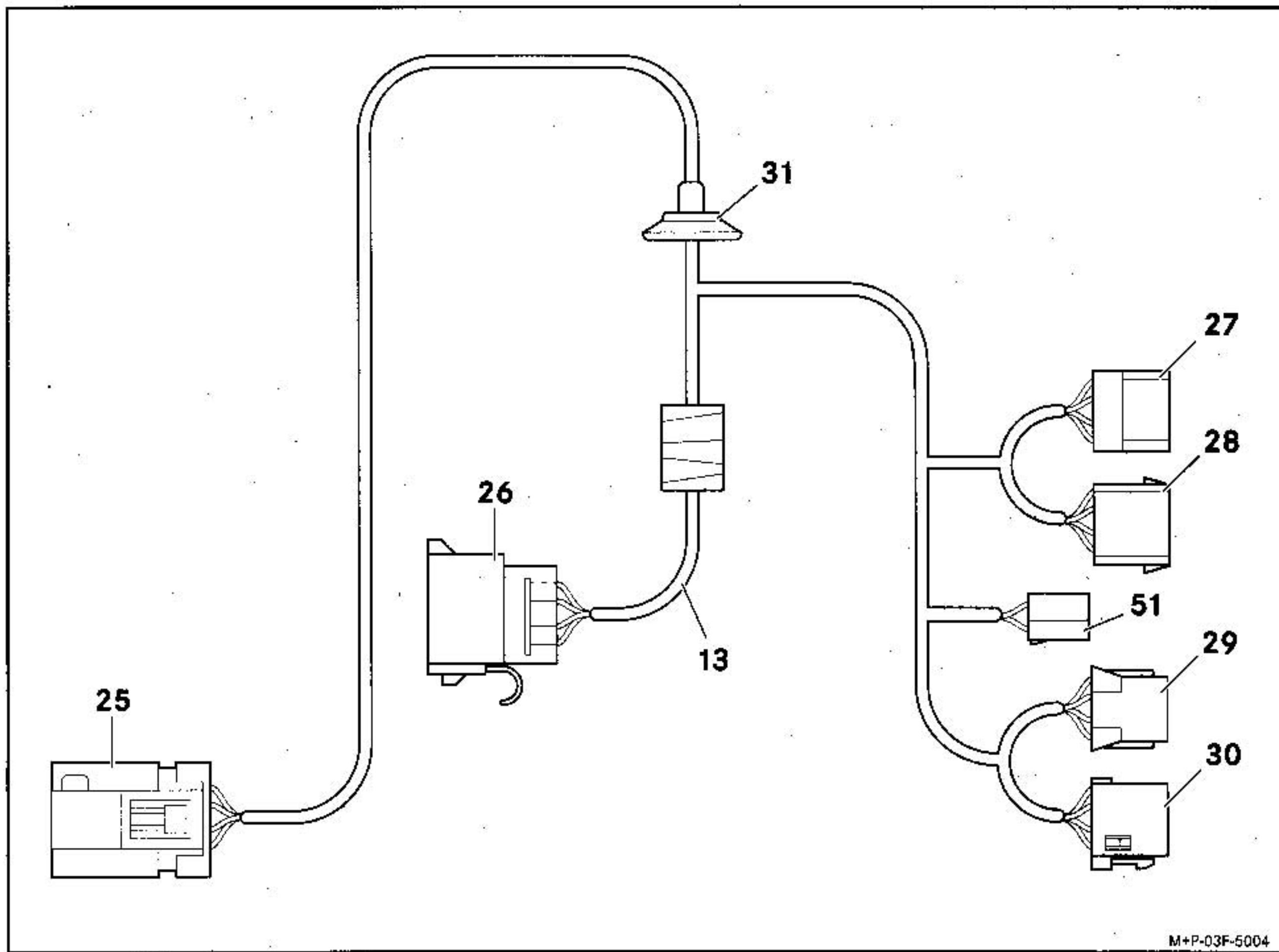
At all points on the vehicle body/chassis where the trailer hitch is fitted, the body sealant and/or underseal must be removed to preserve a tight fit. The body parts must then be cleaned with a standard cleaner and bright body parts coated with a corrosion protection paint to retain appropriate corrosion resistance.

Inform the customer that all the screw connections must be checked/retightened using the proper specified tightening torque after 600 miles (1000 km) of trailer operation.

C MB Special Tools

Memory Saver and Current Drain Tester:

MSD-80 (see MBUSA SSEP (Standard Service Equipment Program,) section E).



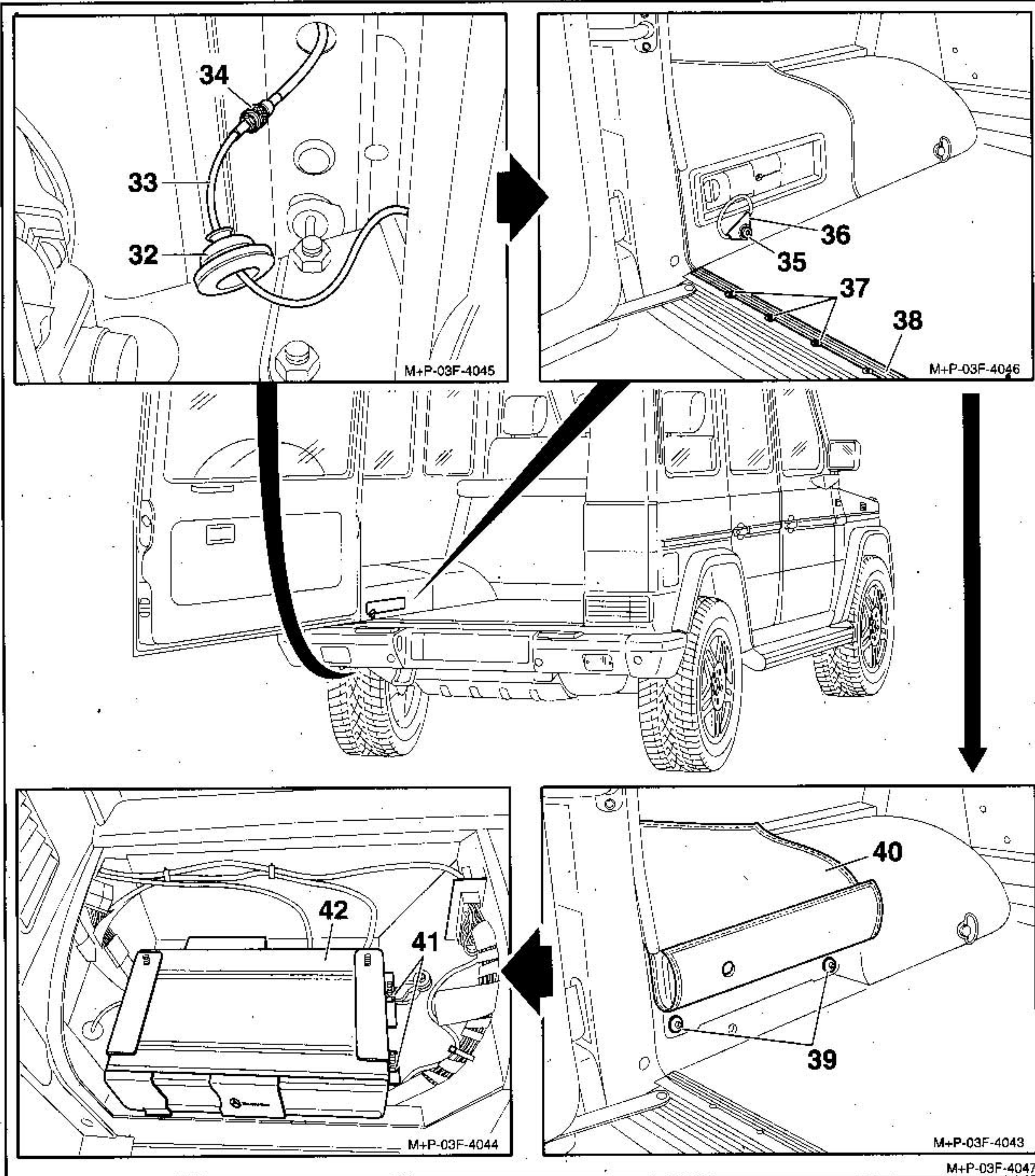
D Electrical connection diagram – cable set

- (13) Cable set with diode board
- (25) 10-pin connecting plug, receptacle
- (26) 16-pin connecting plug, receptacle X30/2 on vehicle
- (27) 6-pin U2 connecting plug, USGA II control unit
- (28) 4-pin U1 connecting plug, USGA II control unit
- (29) 6-pin J2 connecting plug, flasher/brake module
- (30) 6-pin J1 connecting plug, flasher/brake module
- (31) Rubber grommet
- (51) Connecting plug, extension harness brake controller

E Preparatory work

1. Connect Memory Saver and Current Drain Tester: MSD - 80 (see WIS instructions – AR54.10-P-1030-071).

2. Disconnect battery ground cable (see WIS instructions – AR54.10-P-0003G or AR54.10-P-0003PV).



3. Pull rubber grommet (32) for the Tele-Aid antenna cable (33) from the hole. Unscrew cable connector (34) and separate.

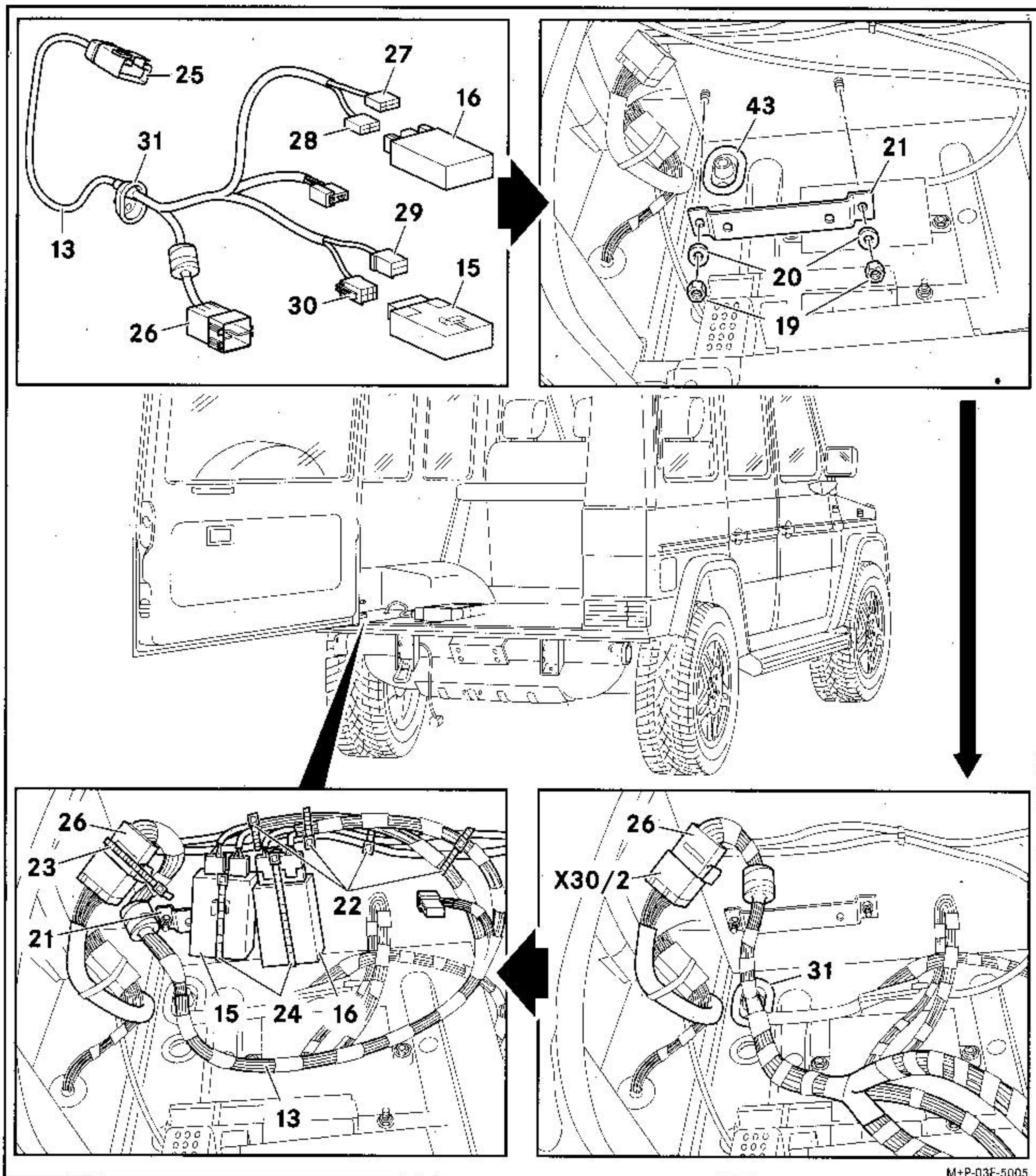
4. Disassemble rear bumper (see WIS instructions – AR88.20-P-2200GG), including license plate lights and separate the cable directly behind the flat plug connector on the plus cable.

5. Unscrew screw (35) together with tiedown hook (36).

6. Unscrew the 3 screws (37) from the carpet edging strip (38).

7. Lift carpet, remove screws (39) from the cover of the control unit (40) and lift off cover (40).

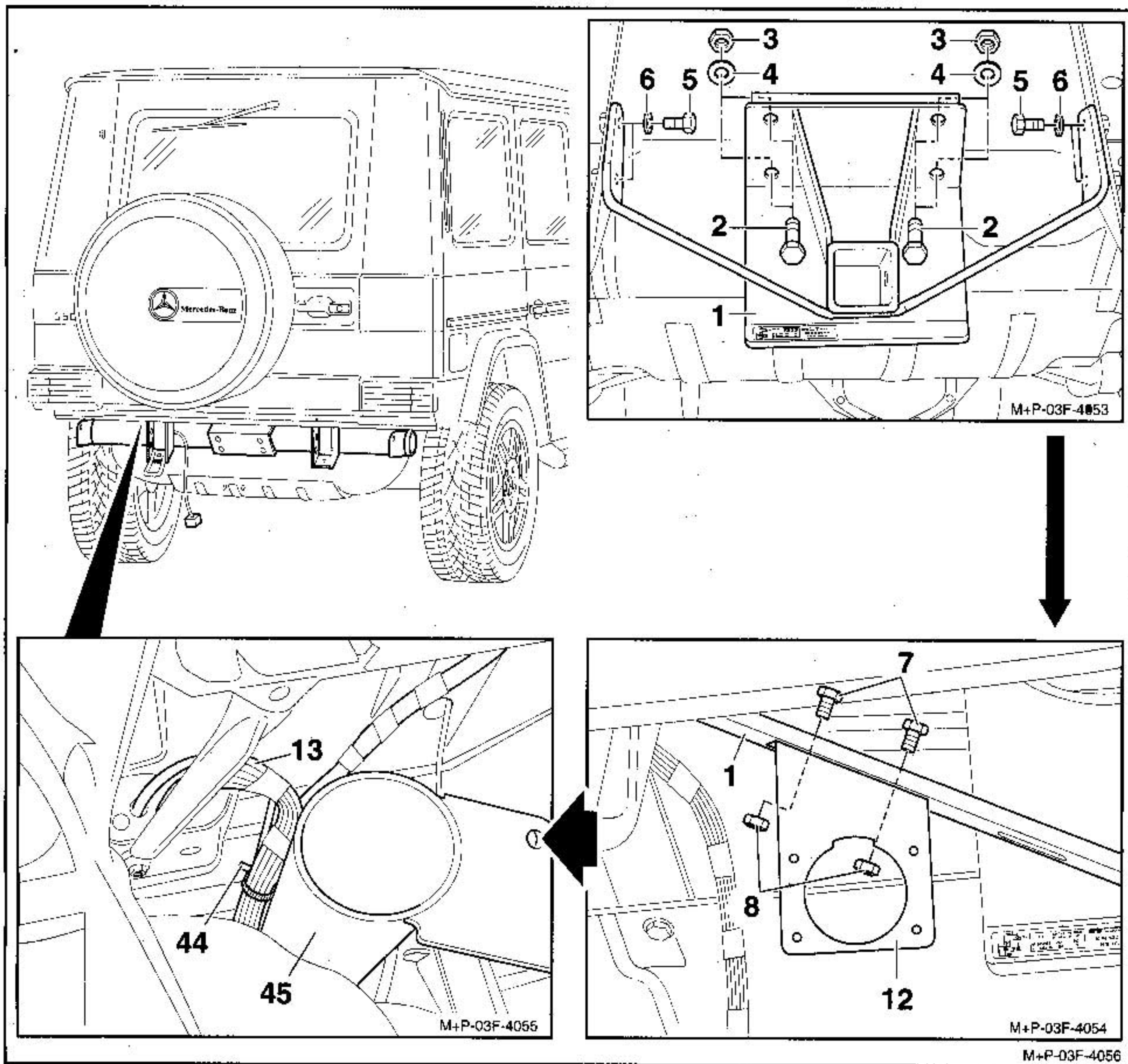
8. Unscrew nuts (41) on the CD changer (42) and lift out the CD changer (42).



M+P-03F-5005

F Installation

1. Plug connecting plugs (29 and 30) onto the flasher/brake module (15) and connecting plugs (27 and 28) onto the USGA II control unit (16).
2. Tighten retaining bracket (21) onto stud bolts with nuts (19) and washers (20).
3. Remove existing rubber grommet (43) (no longer required).
4. Push 10-pin connecting plug (25) from inside through the hole and place rubber grommet (31) in the hole.
5. Push 16-pin connecting plug (26) in the prefitted mating plug X30/2.
6. Press cable straps with mounting foot (24) into the holes in the retaining bracket (21), place cable strap around flasher/brake module (15) and the USGA II control unit (16) and tighten.
7. Attach 16-pin connecting plug (26) with cable strap (23) and cable set (13) with cable straps (22) to the existing cable harness.



Important!

Do not grease or oil the screws as that could cause them to loosen and the assembly to accordingly fail.

8. Attach the trailer hitch (1) with screws (2), washers (4) and self-locking nuts (3) onto the vehicle frame so that it is only hand tight.

Important!

Micro-encapsulated screws and self-locking nuts may only be used once, reuse will defeat their locking characteristics.

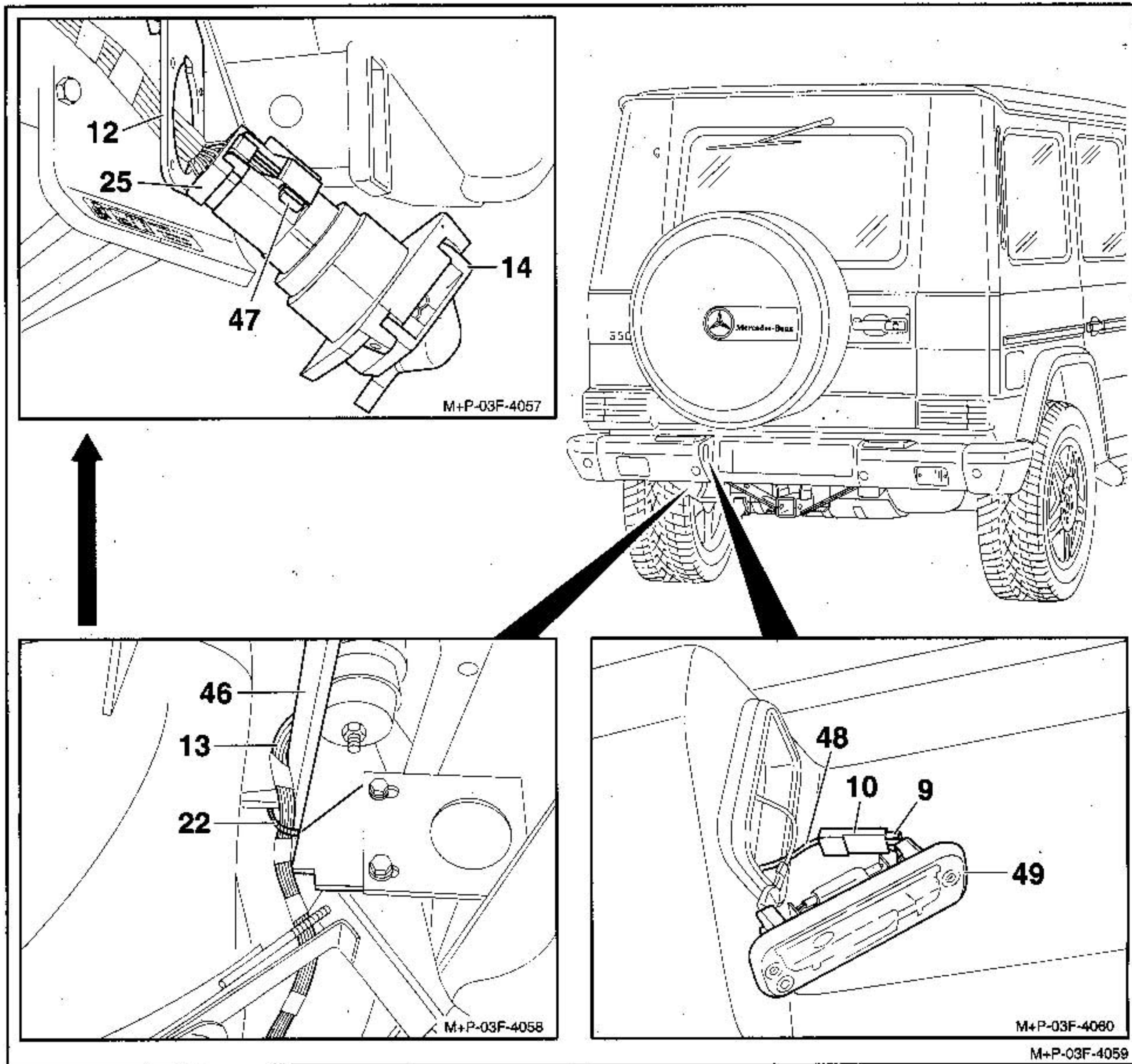
9. Attach the tie-bars (1) for the trailer hitch with the micro-encapsulated screws (5) and washers (6) so that they are hand tight.

10. Tighten screws (2) with a torque of 118 ft lbs (160 Nm) and the micro-encapsulated screws (5) with a torque of 55 ft lbs (75 Nm).

11. Tighten connector plate (12) with screws (7) and nuts (8) onto the trailer hitch (1).

12. Open existing cable strap (44) on the frame tube (45) and tie together the cable set (13) and the existing cable harness.

13. Mount and align rear bumper (see WIS instructions – AR88.20-P-2200GG).



Important!
Install cable sets so that they cannot be chafed or damaged.

14. Strap cable set (13) tightly to the inner wheel liner bracket (46) with cable strap (22).

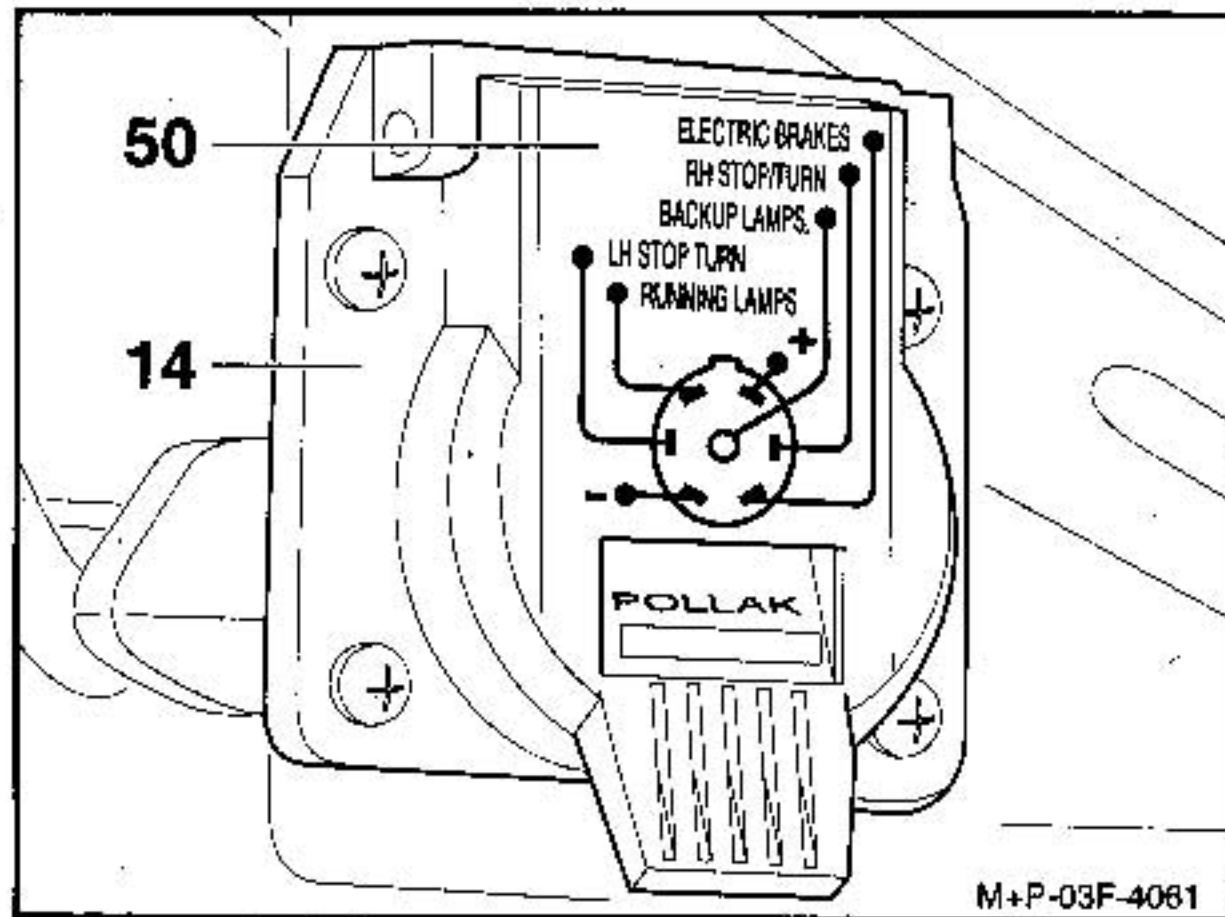
15. Lead 10-pin connecting plug (25) through connector plate (12), plug into receptacle (14) and secure with latch (47).

16. Attach up receptacle (14) to connector plate (12) with sheet-metal screws.

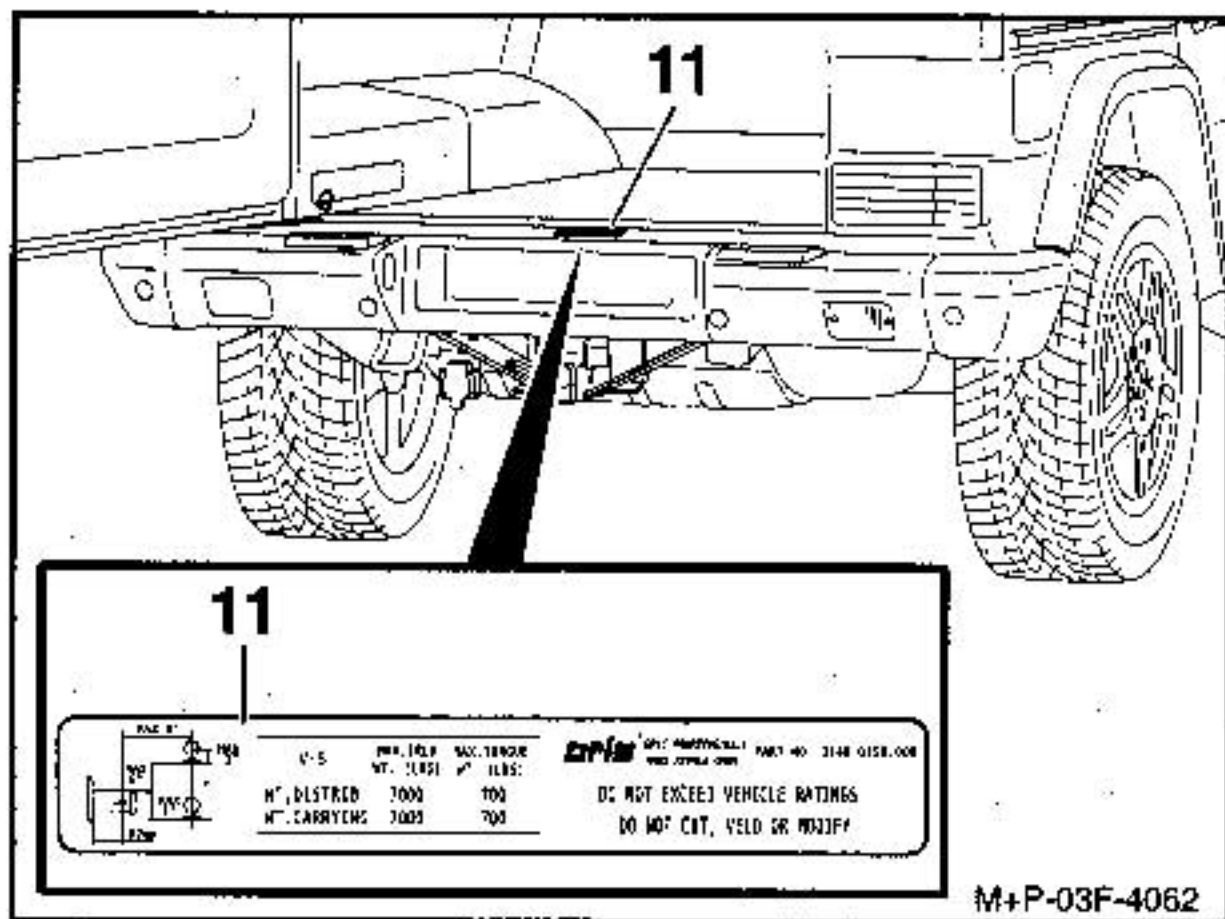
Important!
The positive (+) cable must be completely insulated.

17. Crimp together positive (+) cable (48) with the new flat plug connector (9) and push the insulated housing (10) over them. Connect cable to license plate lamp (49) and install it in the bumper.

18. Attach the threaded cable connectors for the Tele-Aid antenna and reinstall the rubber grommet in the hole.
19. Tighten CD changer in place.
20. Mount cover over control unit box and tighten screws.
21. Tighten down carpet edging strip with 3 screws.
22. Clamp battery in place (see WIS instructions - AR54.10-P-0003G or AR54.10-P-0003PV).
23. Disconnect zero-signal current retention device (see WIS instructions - AR54.10-P-1030-071).



24. Check function of electrical system. The individual pin functions (50) can be found on the cover of receptacle (14).



25. Clean adhesive surface with a grease- and wax-dissolving, non-aggressive cleaning agent and stick the adhesive label (11) centrally on the edge of cargo compartment.